



- APARTMENT 502
- CIRCULATION & SERVICES
- 1 STREET ENTRANCE/EXIT
- A LIFT & STAIRCASE

Floor

|   |                   |                            |
|---|-------------------|----------------------------|
| 5 | <b>APARTMENT</b>  | <b>502</b>                 |
|   | <b>FLOOR AREA</b> | <b>159.1 m<sup>2</sup></b> |
|   | <b>BEDROOMS</b>   | <b>3</b>                   |

|                       |                     |
|-----------------------|---------------------|
| Living & dining area  | 30.3 m <sup>2</sup> |
| Kitchen               | 9.4 m <sup>2</sup>  |
| Entrance hall         | 9.8 m <sup>2</sup>  |
| Gallery (Upper Floor) | 29.6 m <sup>2</sup> |
| Walk-in wardrobe      | 3.8 m <sup>2</sup>  |
| Utility/laundry room  | 3.6 m <sup>2</sup>  |
| WC                    | 1.4 m <sup>2</sup>  |

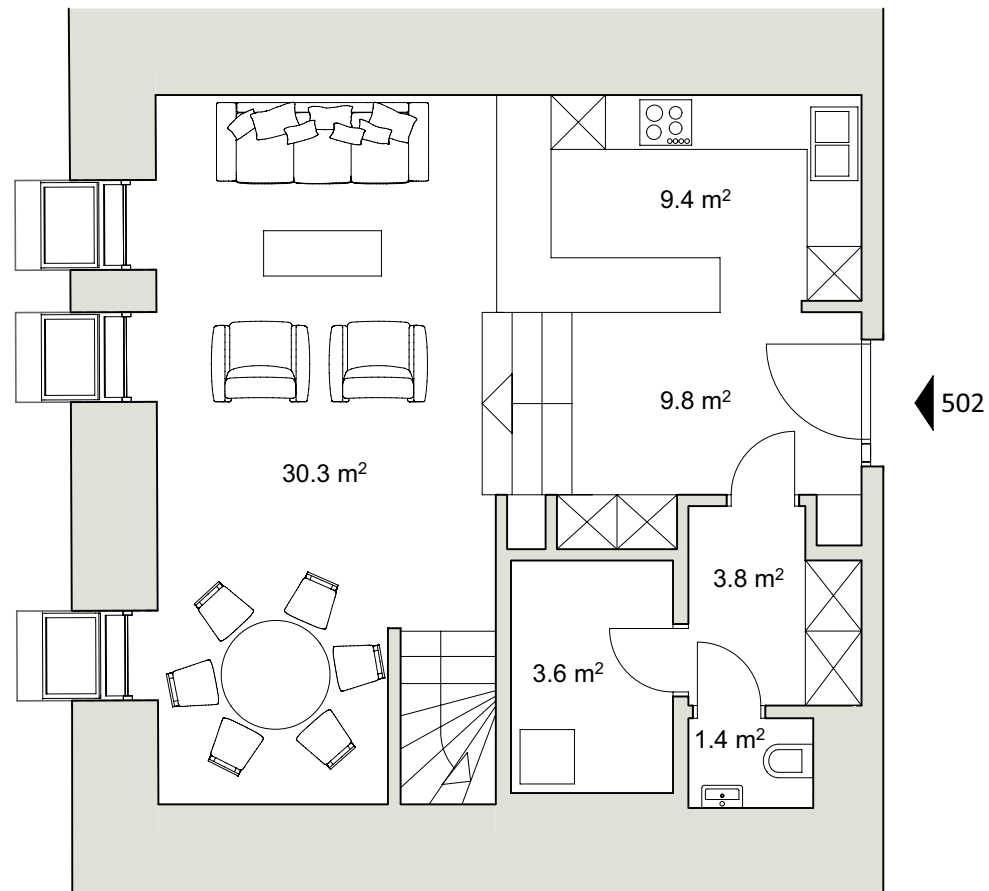
|                         |                     |
|-------------------------|---------------------|
| Bedroom 1 (Upper Floor) | 21.1 m <sup>2</sup> |
| En suite bathroom       | 5.8 m <sup>2</sup>  |

|                         |                     |
|-------------------------|---------------------|
| Bedroom 2 (Upper Floor) | 16.9 m <sup>2</sup> |
| En suite shower room    | 5.2 m <sup>2</sup>  |

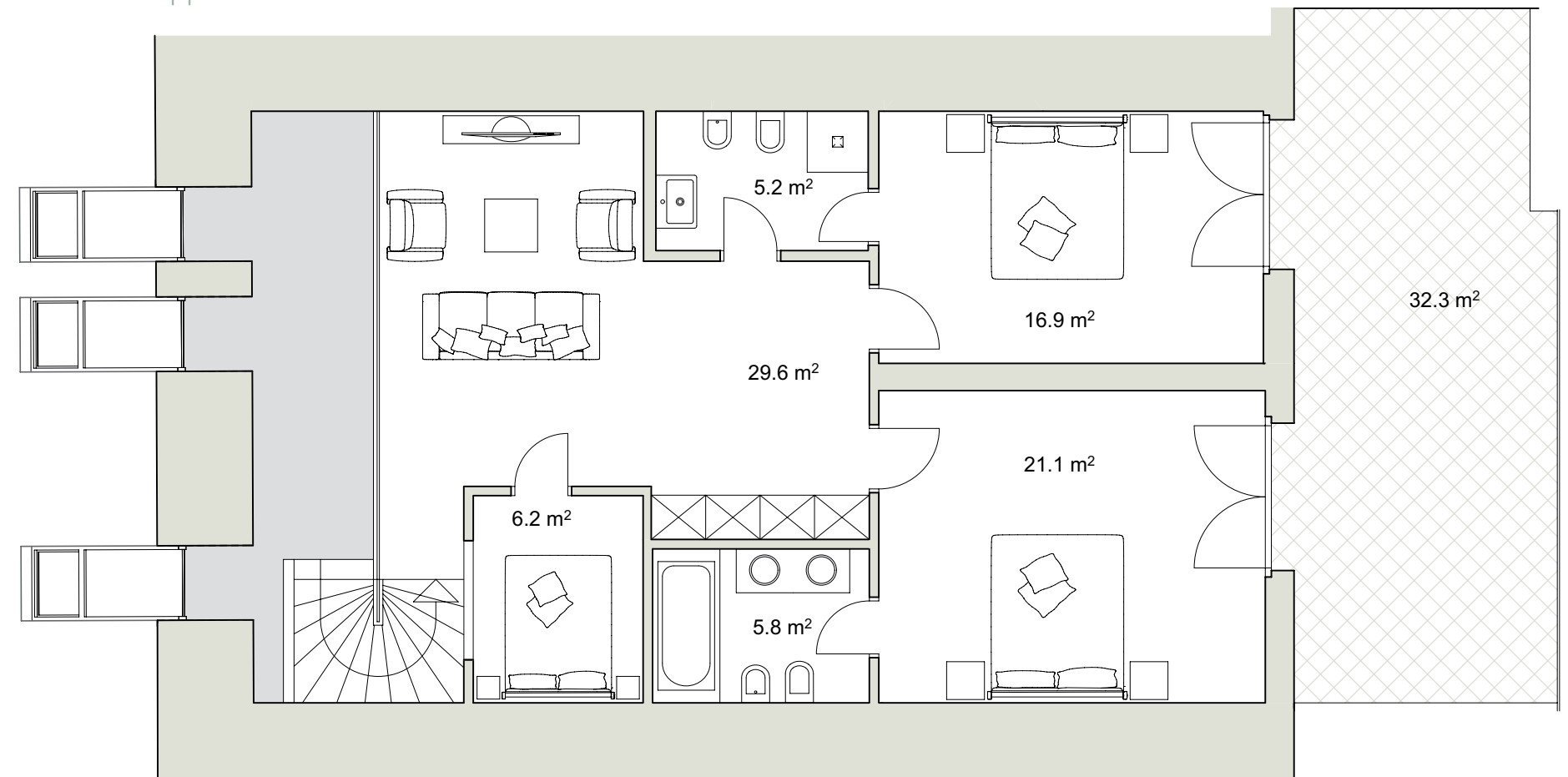
|                         |                    |
|-------------------------|--------------------|
| Bedroom 3 (Upper Floor) | 6.2 m <sup>2</sup> |
|-------------------------|--------------------|

|                                |                     |
|--------------------------------|---------------------|
| External terrace (Upper Floor) | 32.3 m <sup>2</sup> |
|--------------------------------|---------------------|

Lower Floor



Upper Floor



All terraces and any areas with a clear head height of less than 1.9 m have been included in the total floor area at half their measured floor area. All reasonable endeavours have been made by Dorottya KFT to ensure the accuracy of these plans, however, purchasers or lessees may not rely upon these as statements or representations of fact and are advised to make their own enquiries.